



Introduction:

"What is a classifier and how is it different from a handshape?"

Handshapes are one of the five fundamental building blocks or parameters of a sign: Handshape, movement, location, orientation, and nonmanual markers. Yes, yes, I know there are those who will point out that some signs have more than five parameters but notice I used the word "fundamental?" Those five parameters are the *basic* categories. The fact that you can divide "non-manual markers" or other parameters up into several smaller categories is jolly but there are still five *main* parameters. (Nonmanual markers include those aspects of body language that do not involve the hands such as shoulder movements, head tilts, and facial expressions.)

The handshape of a sign is literally the shape (or shapes) in which we form our hand during the production of a sign.

All signs have a handshape.

Now don't go arguing about how "shaking your head" can mean "no" or a body shift can mean "or."

I'm not talking about non-manual behaviors here -- I'm talking about *signs*. Is nodding your head "yes" a sign? No. It is a *non-manual marker*.

Classifiers are signs that use handshapes that are associated with specific categories (classes) of size, shape, or usage.

Over time certain handshapes have been used so often to show certain types of things, shapes, amounts, or sizes, that when you hold up or use one of those handshapes people (who know the language) automatically think of a particular category (or class) of:

- Things (objects, people, animals, vehicles, etc.)**
- Shapes (including outlines, perimeters, surfaces, configurations, gradients, etc.)**
- Sizes (amount, largeness, smallness, relative size, volume, etc.)**
- Usage (movement paths, speed, interactions, etc.)**

The commonly recognized handshapes that are typically used to show different **classes** of things, shapes, and sizes are called "**classifiers**."

The movement and placement of a classifier handshape can be used to convey information about the movement, type, size, shape, location or extent of the thing to which you are referring. (A **referent** is that which you are talking about or that to which you are referring.)

THAT DEAF GUY BY MATT & KAY DAIGLE

CL: A-open / CL: A / CL: B-open / CL: B-closed / CL: B-bent / CL: C / CL: B-curved / CL: claw / CL: C-modified / CL: 1 or d

Lesson 01

CL: A-open / CL: A / CL: B-open / CL: B-closed / CL: B-bent / CL: C / CL: B-curved / CL: claw / CL: C-modified / CL: 1 or d

Lesson 01

Classifiers can help to clarify your message, highlight specific details, and provide an efficient way of conveying information.

Classifiers can be used to:

- * describe the size and shape of an object.
- * represent the object itself.
- * demonstrate how the object moves.
- * convey how it relates to other objects and or people.

Similar to pronouns, that which is being represented (or described) by a classifier must be "introduced" prior to using using the classifier. If I'm going to use a classifier to talk about Jane, first I'll identify her in some way. (If she is in the room I might point at her. If she is not in the room I might spell her name or point to where she usually sits.) Suppose I want to tell you that my sister "bumped into" her old boyfriend yesterday? I might start by signing "MY SISTER" with raised eyebrows to see if you recall my sister. Then after you nod slightly or otherwise indicate that you know who I'm talking about I might sign, YESTERDAY SHE M-A-L-L CL-1 "walking along, bumped-into" CL-1 FORMER BOYFRIEND.

If I'm talking about throwing a baseball, I'll identify the sport before using a CL-3-claw

to represent the ball.

Classifiers tend to mimic the general shape and movement of the objects to which they refer. Suppose I were using a CL-O-flat handshape to represent (the head of) a dinosaur. I would bob the "head" a bit up and down as I moved it forward to represent how the dinosaur was moving. If using that same or a similar handshape (perhaps a slightly curved hand) for a cobra, I would move my arm in such a way as to mimic the cobra's side-to-side dance (or it's strike).

Classifiers often work well with other classifiers to provide specific details about a situation, event, person, or thing.

For example, if you want to describe a couch, you can use the sign for COUCH which is done by signing SIT then using moving both palm-down C-hands outward. If you wanted to make the point that the couch was lumpy you could then move your "C" hands in an up and down wavy manner as you move them to the outside. Or if you wanted to describe the couch as being very long or being in an L-shape you can move your "C" hands further apart or in an "L"-movement path.

Classifiers help to paint a more precise picture of what your object looks like or of what happened. For example, suppose there was a car crash, what happened to the car? Did the other driver hit you from the side, the front? What happened to you? Did you hit your head on the steering wheel or fly through the window?

The list of classifiers below is a work in progress and is therefore not complete. It is not put forth as a comprehensive list of all the classifiers that are being used in American Sign Language, or *how* they are being used. It is simply a list of some of the more common classifier handshapes.

Why Use Classifiers?



Why Use Classifiers? video

Classifiers provide us information about the location of “referents: or non present objects. In the example of a red car hitting an orange car, the red car is placed on the left side and the orange car is placed on the right side. The red car, left hand 3-CL turns and hits the orange car, right hand 3-CL on the inside of the palm representing a side door location.

Classifier



A - MODIFIED

Inanimate objects in specified locations: a house on a street, a statue or vase on a table, a lamp on a desk

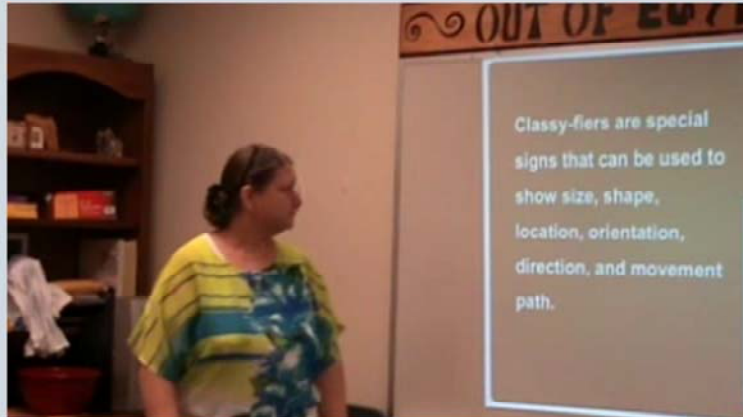


A-CL

The A-CL hand shape is used to demonstrate stationary objects such as statues, trophies, mugs or even house or buildings lined up.

- * An object in a specified location: a house on a street, a statue or vase on a table, a lamp on a desk.
- * Positioning in relation to other people or objects: ahead, behind, fall behind, chase, catch up, accompany, spaced apart, above, beneath, facing each other
- * An object or person that commutes: A person going to the bathroom repeatedly, a person going to work repeatedly, a ski-lift, a ferry.
- * Related lexicalized classifiers that have become standardized signs: COMMUTE, DROWN, WITH, “go steady” (couples romance, BACKUP, CHALLENGE, BASEMENT [These are not classifiers. They are signs that have evolved from classifiers. They are frozen forms. If you unfreeze them and change their movements they may become classifiers again.]

What are Classifiers?



What are Classifiers? Video

Classifiers are hand shapes used to represent people, places or things (nouns) and to show their movement, location and appearance.

Some classifiers represent pronouns but in a much more specific way than in English. In English, the word “it” is used to refer to a book, a car or a table. However, in ASL a different classifier is used for each of these things.

Classifiers can represent a group or a (class) of things such as the ASL 3-CL represents a vehicle –e.g. a car, bus, truck, van, boat or train-but not a person animal or plant.

Classifiers are also used to express the “manner” of action. This information usually is expressed with an adverb in English. Information such as fast, slow, hard or crashed are shown by the movement of the classifier.

Classifier



B - FLAT

Smooth, flat surfaces: road or runway; wall, hallway, ceiling, floor, shelf

Flat mobile surfaces: surfboard, skateboard, snowboard, people mover (moving sidewalk)

Inanimate objects in specified locations:

Pictures on a wall, books on a table, racecar on a road

Inanimate objects in specified positions: books lined upright on a shelf, papers facing down

Height and width: a person's height, the width of a box, a stack of books

Delineating 3 dimensional objects: house, box, room

A non-motorized riding device: horse, bicycle



B-CL

The B-CL is used to show surfaces, walls, floors, roads, shelves, pictures on a wall, or a table top. It is also used to show terrain. Bent B-CL shows long distances of flat landscapes. The flat B-CL shows flat landscapes of shorter distance such as a football field.

- * Smooth, flat surfaces: road or runway; wall, hallway, ceiling, floor, shelf
- * Flat mobile surfaces: surfboard, skateboard, snowboard, people mover (moving sidewalk)
- * Inanimate objects in specified locations: pictures on a wall, books on a table, racecar on a road
- * Inanimate objects in specified positions: books lined upright on a shelf, papers facing down
- * Height and width: a person's height (see CL-B-bent), the width of a box, a stack of books
- * Delineating 3 dimensional objects: house, box
- * A non-motorized riding device: horse, bicycle
- * Combine with CL-1, CL-3, or CL-ILY to show movement over surface
- * sea-turtle (using both hands and wiggling thumbs)

* Related lexicalized classifiers that have become standardized signs: horse-RIDE, PAPER [These are not classifiers. They are signs that have evolved from classifiers. They are frozen forms. If you unfreeze them and change their movements they may become classifiers again.]

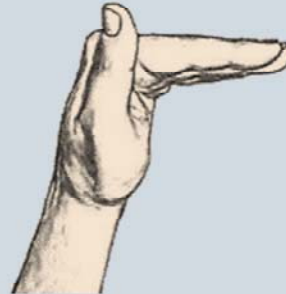
Classifier



B - BENT

Smooth, flat surfaces: a long stretch of desert or road

Describing a object with sharp corners: the top of an area, such as a shelf or refrigerator.



B-bent

- * Smooth, flat surfaces: a long stretch of desert or road
 - * Describing a object with sharp corners: the top of an area, such as a shelf or refrigerator
 - * A trailer (such as might be pulled behind a truck)
 - * Amounts: less of
-
- * Related lexicalized classifiers that have become standardized signs: ROOM/box, SHELF-(variation), EQUAL, LESS, too-MUCH [These are not classifiers. They are signs that have evolved from classifiers. They are frozen forms. If you unfreeze them and change their movements they may become classifiers again.]

Classifier



C

Long cylindrical objects: pipe, canal, tunnels

Short cylindrical objects: cup, glass, bottle

Thick cylindrical shapes: tree trunk, biceps

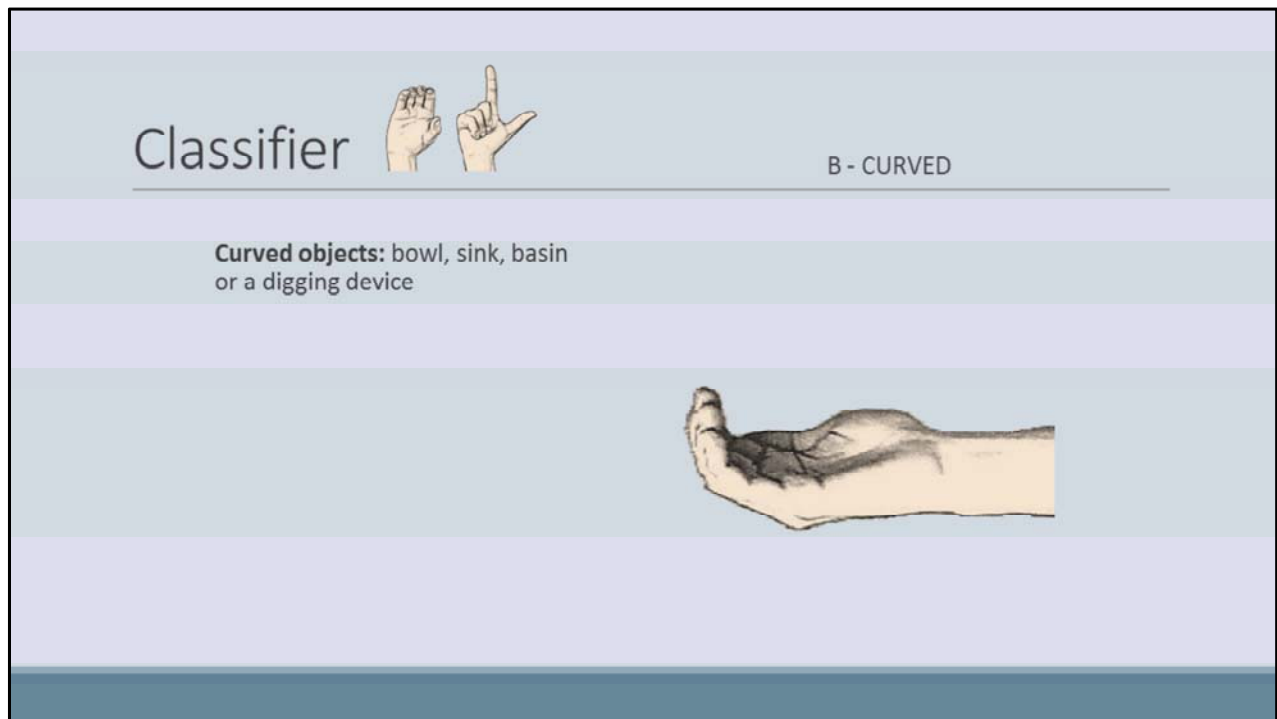
Thickness or depth of an object: a book, pizza, blanket, stack of papers, snow fall



C-CL

The C-CL is used to show cylindrical objects such as a cup, a large pipe, vase or bottle, Two handed C-CL can represent a large hole in the wall or a man hole in the street.

- * Long cylindrical objects: pipe, cave, tunnel, pole, small tree trunk, large branch
- * Short cylindrical objects: cup or glass, bottle
- * Thick objects and/or the thickness or depth of an object: a book, pizza, blanket, stack of papers, biceps, snow fall
- * Related lexicalized classifiers that have become standardized signs: CUP, BINOCULARS, [These are not classifiers. They are signs that have evolved from classifiers. They are frozen forms. If you unfreeze them and change their movements they may become classifiers again.]



B-curved

Curved objects: bowl, sink, basin or a digging device

Used for?

New

Marry

Night\English

Scooping

Swim

Hanging from a cliff

climb

* Related lexicalized classifiers that have become standardized signs: a-BOWL, DIG
[These are not classifiers. They are signs that have evolved from classifiers. They are frozen forms. If you unfreeze them and change their movements they may become classifiers again.]

CL:C



CL: C video

CL: C > 5 and O > 5



CL: C>5 and O>5 video

Classifier



C - CLAW

Clusters of objects in specified location: a group of students in the back room, a cluster of flowers

Sections: location of a room in a house, sections of a city, an article or column in a newspaper

Large objects in a specified location: a house out in the middle of nowhere, a camper on the back of truck

Medium, round, flat objects: cookie, badge, small cap (yarmulke),
a large dial,

Small spherical objects (with fingers closer together): clown nose, bulging eyes

Large spherical objects (two hand): ball

Teeth: commonly used for baring teeth, multiple fangs



C-claw

- * Clusters of objects in specified location: a group of students in the back room, a bouquet of flowers
 - * Sections: location of a room in a house, sections of a city, an article or column in a newspaper
 - * Large objects in a specified location: a house out in the middle of nowhere, a camper on the back of truck
 - * Medium, round, squat objects: cookie, badge, small cap (yarmulke), a large dial, over-ear-headphones
 - * Small spherical objects (with fingers closer together): clown nose, bulging eyes
 - * Large spherical objects (two hands): ball
 - * Teeth: baring teeth, full set of teeth
- * Related lexicalized classifiers that have become standardized signs: CLOWN, RADIO [Those are not classifiers. They are signs that have evolved from classifiers. They are frozen forms. If you unfreeze them and change their movements they may become classifiers again.]

Example of a sentence mixing a regular sign and a classifier: The clown had a really big nose.

Classifier



C - MODIFIED

Small round flat objects: a disc, gold nugget, piece of food, **moon**

Height and/or width of small objects (similar to CL: G): a small bottle of perfume, a short pencil, a long screw or nail

Large pinchers: parrot beak



C-modified

- * Small round flat objects: a disc, a piece of food, the moon in the sky
- * Height and/or width of small objects (similar to CL- G): a small bottle of perfume, a short pencil, a long screw or nail
- * Pincers, curved beaks
- * Used to show the holding of small objects between the thumb and index finger

- * Related lexicalized classifiers that have become standardized signs: PARROT [These are not classifiers. They are signs that have evolved from classifiers. They are frozen forms. If you unfreeze them and change their movements they may become classifiers again.]

Example of a sentence mixing a regular sign and a classifier: My friend was walking past my parrot and my parrot bit him on the shoulder!

C-Flat

- * Handling or location of a book

- * Indication of volume: going flat, on sale, discount
 - * shape of the mouth: smiles or frowns
 - * derogatory portrayal of talking
-
- * Related lexicalized classifiers that have become standardized signs: FROWN, SMILE

Classifier



D OR 1

Long, skinny objects: most commonly, a singular person

Small cylindrical objects: sticks, pencils, toothbrush

Delineating 2 dimensional objects: poster board, plot of land, circle, diamond (any shape)

Trajectory paths and or connections: one way street, two way street, intersection, ball flying midair, a snake mobbing across a surface, tears

Animals that crawl: (modifications CL:1>CL:X) Caterpillar, snail

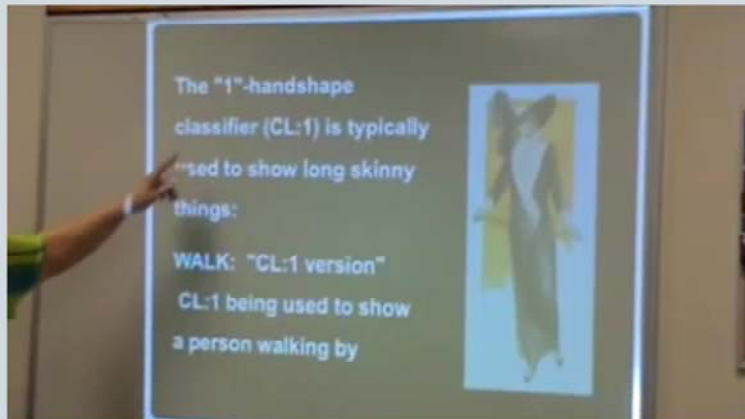


CL: d or 1

- * Long, skinny objects: most commonly, a singular person
- * Small cylindrical objects: sticks, pencils
- * Delineating 2 dimensional objects: poster board, plot of land, circle, diamond (any shape)
- * Trajectory paths and or connections: one way street, two way street, intersection, ball flying midair, a snake moving across a surface, tears
- * The way certain animals move: (modification CL-1>CL-X) caterpillar crawling, worm tunneling, snail crawling

* Related lexicalized classifiers that have become standardized signs: CATERPILLAR, WORM, MEET, MEET-him/her, BOARD, SIGN-display. [These are not classifiers. They are signs that have evolved from classifiers. They are frozen forms. If you unfreeze them and change their movements they may become classifiers again.]

CL:1 or d



CL: 1 or d video

THAT DEAF GUY

BY MATT & KAY DAIGLE



Lesson 02

CL: 1 - I / CL: F / CL: G / CL: H / CL: I / CL: L / CL: O / CL: O-flat / CL: R

Lesson 02

Classifier



I 1 - HORN

Animals with two horns: bull, ox, **cow**

Pronged items: goal post, pitch fork, forklift, and the start of a gun (at the beginning of a race)

Objects with sharp borders for roofs and loose sides: tent, canopy, circus, castle



CL Horns

- * Animals with two horns: bull, ox, cow
- * Pronged items: goal posts, pitch fork, forklift, and the start of a gun (at the beginning of a race)
- * Objects with sharp borders for roofs and loose or open sides: tent, canopy, circus, castle, carport
- * Two long, skinny objects spaced apart from each other: "splits in bowling"

Classifier



F - OPEN

Small, thin, round objects: button, coin, polka dots, pepperoni, pepper shaker

Long, thin, cylindrical shaped objects: stick, dowel, curtain rod, small roll of paper, water hose, faucet

Eye gaze: a person looking up or down, eyes moving back and forth, a person rolling his eyes

Person moving along: hiking, walking, wandering around

Picking up small objects: coins, pins, hair, bug



F-CL

The F-CL is used to show small circular objects such as coins, buttons, eye movement, or the shape of a cigar.

- * The use, movement, or placement of small, thin, round objects: button, coin, polka dots, pepperoni, pepper shaker, chain links, rings: ear, nose etc., a single drop of rain, a single snowflake.
- * Long, thin, cylindrical shaped objects: stick, dowel, curtain rod, small roll of paper, water hose, faucet
- * Eye gaze: a person looking up or down, eyes moving back and forth, a person rolling his eyes
- * Person moving along: hiking, walking, wandering around
- * Small round holes or openings
- * manipulation or holding of very thin things or small things: flossing, threading a needle, turning a page, pulling out a hair.

- * Related lexicalized classifiers that have become standardized signs: COINS, BUTTONS [These are not classifiers. They are signs that have evolved from classifiers. They are frozen forms. If you unfreeze them and change their movements they may

become classifiers again.] DYE-(holding on to something and dunking it in dye.)

CL: F



CL: F video

Classifier



G

Short or shallow depths: thin layer of ice, shallow water, a small stack of papers

Flat and thin with squared edges: picture frame, ruler, strip of paper

Thin shapes (in general): mustache, sideburns, collar

Small Pinchers: beak of a small bird, tweezers



G-CL

The G-CL is used to show thin shapes such as eyebrows, mouth, a mustache, collar or a bird's beak.

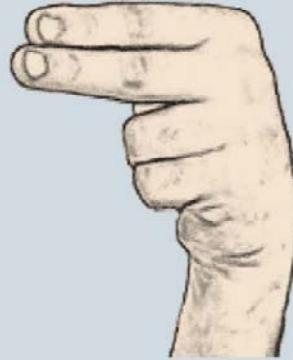
- * Specifies small sizes, shapes, or amounts
- * The holding and manipulation or state of something relatively small: Ear phones, USB-thumb-drives-(version_1), eye-droppers, uppercase / lowercase (can start "expanded" and change to regular sized to show "lowercase") or can start closed and change to a wide-G or index-thumb-C to show "uppercase")
- * Short or shallow depths: thin layer of ice, shallow water, a small stack of papers
- * Flat and thin (or shallow) with squared edges: picture frame, ruler, strip of paper, rails-on-a-railroad
- * Thin shapes (in general): mustache, sideburns, collar
- * Small Pinchers: beak of a small bird, tweezers
- * The movement of eyelids: blinking, waking up, surprise, opening one eye, squinting
- * Diminishing into the distance / leaving: changes from a wide-G to a closed-G to show concept of "gone"
- * Come into view suddenly: An object that was far away comes closer (thus appearing larger) by using a closed-G and expanding it into an index-thumb-C.

Classifier



H - BENT

Fastening small objects to something else (using a clasping movement):
badge, earrings, hair barrette, paper clip,
diaper

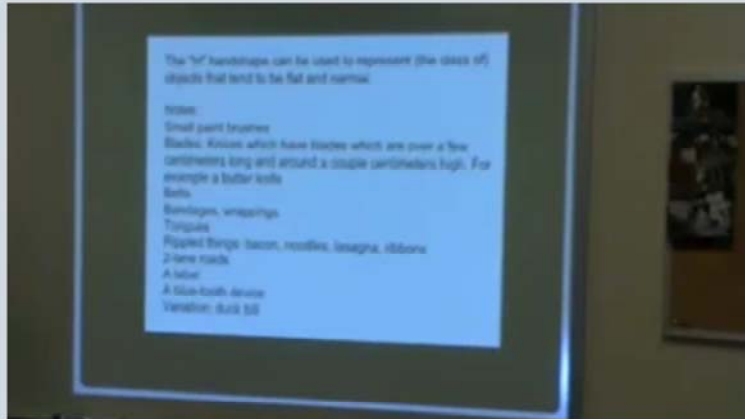


H-Bent

Can include versions of the "H" hand in which the thumb is slightly separated from the fingers and then closes onto them as if showing a clamping or attaching movement.

- * Fastening small objects to something else (using a clasping movement): badges, clip-on earrings, hair barrettes, paper clips
- * Placement of an electrode onto the skin
- * A tongue (some variations of tongue movements)

CL: H



CL: H video

Classifier



H OR U

A variation of CL: V: legs together, standing on a sidewalk, a person on a surfboard

Thin flat objects: boards, bacon, noodles, name tag or badge, label, band aid

Lathering device: spreading butter or frosting, a dog licking a person's face



H or U CL

- * Thin flat objects: knives, bacon, some types of noodles, name tags or badges, labels, bandage strips
- * Spreading butter, frosting, or similar substances
- * Boards: railroad ties, beams-(wood/construction)
- * A variation of CL- V: legs together, standing on a sidewalk, Joke sign: "Standing Ovation," a person on a surfboard

Classifier



Very thin and long objects: string, yarn,
wire, thread, cherry stem

Defining boundaries: line, lie that one
does not cross



I CL

- * Very thin and long objects: string, yard, wire, thread, cherry stem, thin-stringy noodles
- * Boundary lines, perimeters
- * Small or very small paint brushes

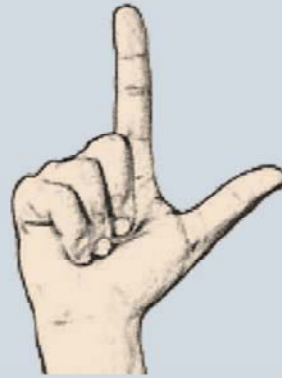
Classifier

L

Thin squared objects: placemat, drivers license, greeting card

Thin squared objects in a specified location and or position: pictures on a wall, mirror, a window frame

Objects with a short barrel: drill, welding device, gun (pistol), laser



L-CL

The L-CL is used to show the edges of flat objects either square or round such as plates, pictures, clocks or a lake or a liquid spilled on the floor.

- * Thin squared objects: placemat, driver's license, greeting card
- * Thin squared objects in a specified location and or position: pictures on a wall, mirror, a window frame
- * Objects with a short barrel: drill, welding device, gun (pistol), laser

Classifier



o

Thick medium sized, cylindrical objects:
rod, tree branch, pipe, large cable, salt
shaker

Viewing devices: goggles, telescope,
binoculars



O-CL

The O-CL is used to show small cylindrical objects such as pipes, hoses or handle bars.

- * Thick medium sized, cylindrical objects: rod, tree branch, pipe, large cable, firehouse, salt shaker
- * Viewing devices: goggles, telescope, binoculars

Classifier



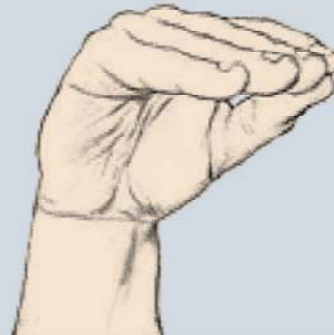
O - FLAT

Small squall objects (with rounded ends): very fast race car

Objects that are round at the bottom and a slight opening at the top: tulips, closed flower bud

Animals with long necks: giraffe, llama, goose, swan, dinosaur, cobra

Thick claws: (slight modification of CL: O-flat>CL:5) lobster, crab



O-flat CL

- * The state of being flat
- * Having drank a bottle empty, having read a book
- * Small squat objects (with rounded end): very fast race car
- * Objects that are round at the bottom and a slight opening at the top: tulips, closed flower bud
- * Animals with long necks: giraffe, llama, goose, swan, dinosaur, cobra
- * Thick Claws: (slight modification of CL-O-flat>CL-5) lobster or pinchers
- * Shutting up (not talking)

Related Lexicalized classifiers:

SHUT-UP!, FLAT, LOBSTER, flattened-SELF-ESTEEM

Classifier



R

Braided or twisted material: rope, cable, braids, curled strands (hair or ribbon)

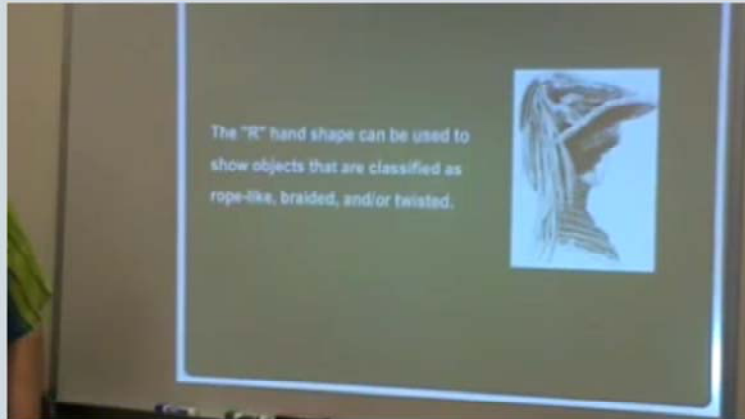
Short, round, somewhat thick with narrowed tips: cigars



R CL

- * Braided or twisted material: rope, cable, braids, curled strands (hair or ribbon)
- * Short, round, somewhat thick with narrowed tips: cigars

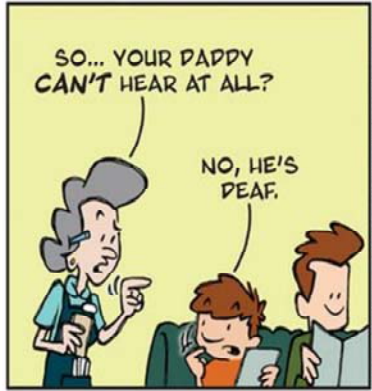
CL: R



CL: R video

THAT DEAF GUY

BY MATT & KAY DAIGLE



Lesson 03

CL: S / CL: V / CL: V-bent / CL: X / CL: Y / CL: 3 / CL: 3-bent / CL: 4 / CL: Claw / CL: T / CL: ILY

Classifier



S

Solid, spherical objects: head (of a person or animal); head bobbing, head retreating (into shell)

Ramming device: pistons of a car engine, fist (or anything solid that can be jammed in or packed in tight)

Cranking handle: window crank, old fashion ice cream machine

Long thin round hand-held objects: spear, large stirring spoon, rake handle

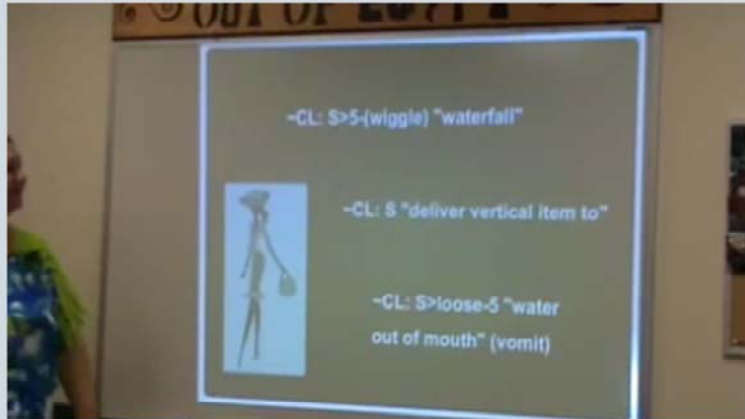


S-CL

The S-CL is used to show a head moving back and forth, peeking out of a doorway, a turtle stretching out it's neck or an owl turnings its head.

- * Solid, spherical objects: head (of a person or animal); head bobbing, head retreating (into shell)
- * Ramming device: pistons of a car engine, fist (or anything solid that can be jammed in or packed in tight) Cranking handle: window crank, old fashion ice cream machine
- * Long thin round hand-held objects: spear, large stirring spoon, rake handle

CL: S > 5



CL: S>5 video

Classifier



V OR 2

People (or rather legs of people): laying down, standing up, legs together, kicking

Two long thin things, parallel to one another: train tracks

Two pronged device: fork, forklift

Groups of 2: 2 people walking together or standing

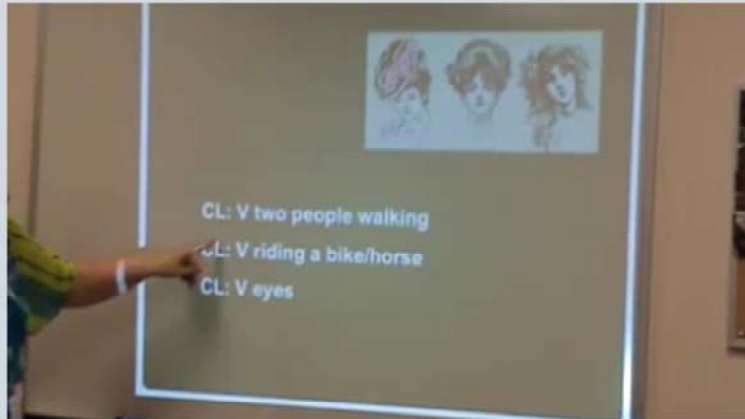
Scissoring object: scissors, claws of a crab or lobster



The **V or 2-CL** with finger tips pointing up is used to represent two people walking. However, with fingertips pointing down it can represent a person's legs walking, running, jumping or sitting.

- * People (or rather legs of people): laying down, standing up, legs together, kicking
- * Two long thin things, parallel to one another: train tracks
- * Two pronged device: fork, forklift
- * Groups of 2: 2 people walking together or standing
- * Scissoring object: scissors, claws of a crab or lobster

CL: V or 2



CL: V or 2 video

Classifier



V - BENT

Seated (person or animal): crouching, squatting, hunched down, perched

Bending knees: climbing stairs or mountains, **jumping, sitting, animal galloping**

Arrangement of chairs: chairs in a semi-circle or semi circle; multiple rows

Thin pulling object: bow string, pulling wire (to signal the bus to stop)

Sliding device: sled, roller skates

Raking device: parallel scratch marks or paint streaks

Sets of teeth: chattering teeth

Head of an animal with floppy ears: rabbit

Two pronged teeth: most commonly, snake, vampire, squirrel or chipmunk

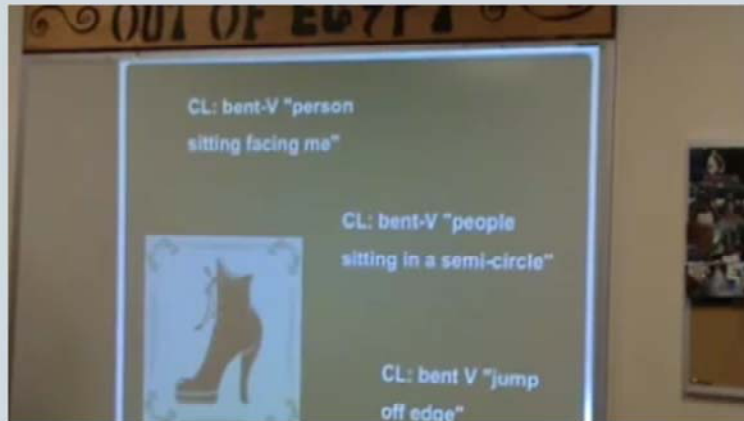
Long objects with a connective ending: bones, joints



V-bent CL

- * Seated (person or animal: crouching, squatting, hunched down, perched
- * Bending knees: climbing stairs or mountains, jumping, sitting, 2-hands-galloping
- * Arrangement of chairs: chairs in a semi-circle; circle or semi circle; multiple rows
- * Thin pulling object: bow string, pulling wire (to signal the bus to stop)
- * Sliding device: sled, roller skates
- * Raking device: parallel scratch marks or paint streaks
- * Sets of teeth: chattering teeth
- * Head of an animal with floppy ears: rabbit
- * Two pronged teeth: most commonly, snake, vampire, squirrel or chipmunk
- * Long objects with a connective ending: bones, joints

CL: V-bent



CL: V-bent

Classifier



X

A person or animal that is crouched or hunched over (using a modified version of CL:1): a person who skulks, slinks, shrinks or slouches.

A scratching or digging device: scratch or scar, a digging or chipping apparatus (such a pike ax or mining tool)

Anything with a hook: boat anchor, door latch, fishing hook, talons, tow, bat (animal), beaked nose

Long curved sliding device: ice skates, skis



CL: X

- * A person or animal that is crouched or hunched over (using a modified version of CL- 1): a person who skulks, slinks, shrinks or slouches.
- * A scratching or digging device: scratch or scar, a digging or chipping apparatus (such a pick ax or mining tool)
- * Anything with a hook: boat anchor, door latch, fishing hook, talons, tow, bat (animal), beaked nose, scorpion's tail, clothes hangers
- * Long curved sliding device: ice skates, skis
- * The movement of bent legs: running furiously, cross-legged, kicked-back-(relax), a bull pawing at the ground before charging, (etc.)
- * The movement of a convertible car's top

CL: X



CL: X video

Classifier



X-closed

The holding and manipulation of something very small, very fine, or very thin such as a needle or a razor blade.



X-closed CL

* The holding and manipulation of something very small, very fine, or very thin such as a needle or a razor blade.

Classifier



X-modified

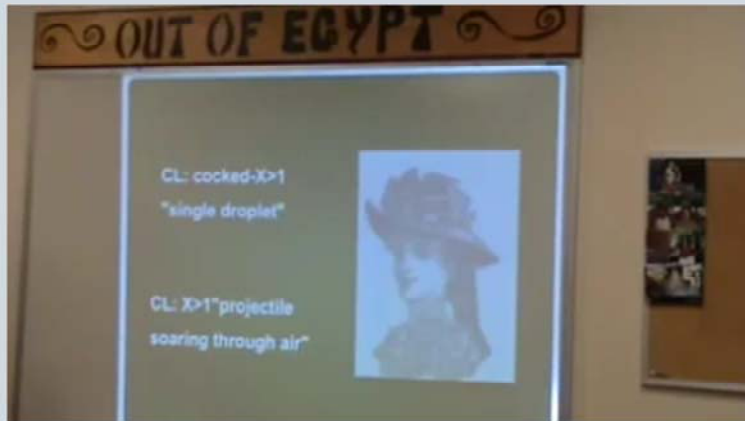
Small objects commonly held between fingers:
key or winding device



X-modified CL

* Small objects commonly held between fingers: key or winding device

CL: X > 1



CL: X>1 video

Classifier



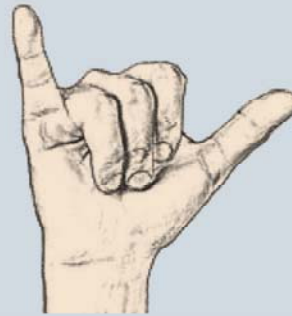
Y

Wide or long objects: hippopotamus mouth, long word, high heels

Objects with handles: beer mug, pitcher, and in some instances, suitcase, luggage, or briefcase

Long curved object: cow horn, smoking pipe, telephones

Spanning the width or breadth of an object: ruler



Y-CL

The Y-CL is used to show a wide object, a hippo's mouth or an obese person walking.

- * Wide or long objects: hippopotamus' mouth, long word, high heels (stilettos)
- * Objects with handles: beer mug, pitcher, and in some instances, suitcase, luggage, or briefcase
- * Long curved object: cow horn, smoking pipe, telephone
- * Spanning the width or breadth of an object: ruler
- * Certain types of precision knives: "straight-edge razor" usage

Classifier



3

Motorized vehicles: car, tractor, helicopter, bus, motorcycle

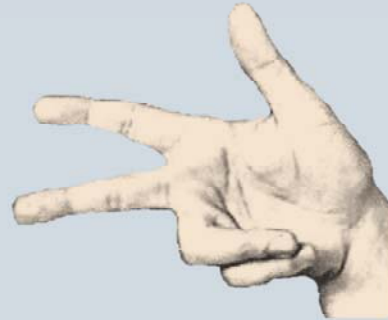
Vehicle related events: parking a car, driving erratically, parallel parking, garage, car accident

Groups of 3: 3 people crossing the road

Feet: duck feet, hiking, walking, position of feet as a person walks

Liquid spray over large surfaces: spray painting a car or house

(Upright) sails on a boat



The **3-CL** is used to represent vehicles such as a car, truck, train, motorcycle or three people or animals walking.

CL: 3

A "Classifier 3" (CL:3) is a thumb-up three handshape. CL:3 is generally used to represent a vehicle. It can be used as a pronoun for cars, trucks, motorcycles, (some) boats, and submarines. It is NOT used for airplanes, but it is used in one of the variations of "helicopter."



CL: 3 video

Classifier



3 - CURVED

Small objects gripped by the index, thumb and middle finger: comp. mouse, baseball, bowling ball

Large beak: commonly used to represent birds of prey, eagle, falcon (if placed in front of mouth)

Hands: (modification of CL:5-claw) particularly for scaling or climbing large object, wall, boulder

Hands stashing: stocking shelves, investing in stocks

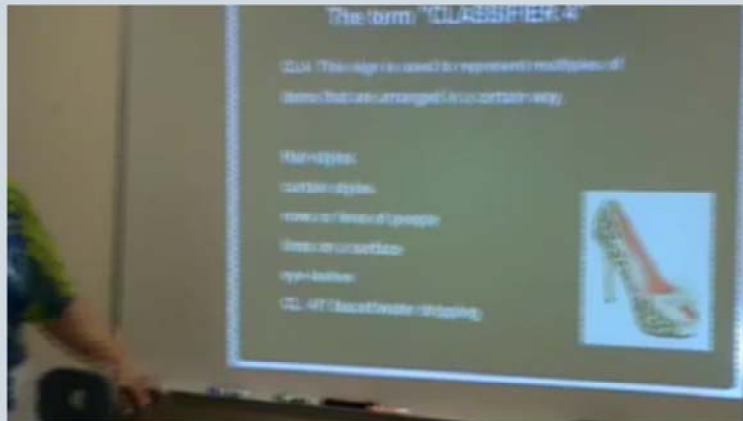
Containers held by index and thumb, requiring ejection of contents (using thumb): needle, vaccinations



3-curved

- * Small objects gripped by the index, thumb and middle finger: computer mouse, baseball, bowling ball
- * Large beak: commonly used to represent birds of prey, eagle, falcon (if placed in front of mouth)
- * Hands: (modification of CL-5-claw) particularly for scaling or climbing large object, wall, boulder
- * Hands that are stashing: stocking shelves, investing in stocks
- * Containers held by index and thumb, requiring ejection of contents (using thumb): needle, vaccinations

CL: 4



CL: 4 video

Classifier



4

Parallel lines: stripes, bars, fence, upright boundaries

Objects that leak: bleeding, drool, running water, draining (ear, sink, pipes)

Objects that flow: curtains, hair, streamers

Group of 4: 4 people standing or walking together

Traffic: (using a modified 4 or 5 handshape) traffic jam, multi-lane freeways



The **4-CL** can represent stripes, a fence, prison bars, teeth bared, bangs hanging or whiskers. When the fingers are bent they can represent a group of people or animals in a circle or lined up, ect.

- * Parallel lines: stripes, bars, fence, upright boundaries
- * People standing in line. The movement of lines of people.
- * Objects that flow or leak: bleeding, drool, running water, draining (ear, sink, pipes)
- * Objects that stream or extend: curtains, hair, streamers, rainbows
- * Group of 4: 4 people standing or walking together
- * Traffic: (also "CL-5"), certain types of traffic movement, multi-lane freeways
- * bandwidth, streaming (video, audio)

* Related lexicalized classifiers that have become standardized signs: RAINBOW, CURTAINS, IMMIGRATION/admittance, PLAID / Scotland, BLOOD, "LINE-of-people," SCHEDULE. [These are not classifiers. They are signs that have evolved from classifiers. They are frozen forms. If you unfreeze them and change their movements they may become classifiers again.]

Example of a sentence mixing a regular sign and a classifier: I went to stand in line and then noticed that the line was extremely long!

Classifier



5

Stiff and straight: hairs or fur that stand on end, Mohawk

Objects that are extremely porous: filters, screen, wind, breeze

Group of 5: 5 people standing or walking together

Large flat object: a serving platter, flat lid

Flowing porous objects (using a modified 5) CL:5 > CL:O or CL:O > 5: headlights, flashing lights, sunlight, shower

Objects that have projectile movements: vomit, diarrhea, flash flood, copious tears

Delineate height or movement of water: ocean, flood, rising water, waterfall

Traffic: (using a modified 4 or 5 handshape) traffic jam multi-lane freeways

Upright objects viewed while traveling very fast: commonly used to describe blurred scenery while driving very fast.

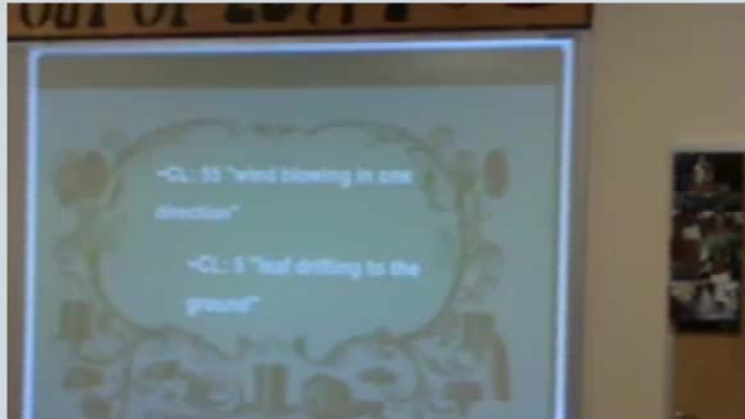


The **5-CL** can be used similarly to the 4-CL for bars, hairstyles, stripes or traffic backed up. Variations of this classifier are the bent claw hand shape and also the open palm 5 with the finger tips wiggling. (heard of cattle, cattle milling around, or mass of cattle moving together) It can also be used to describe a rough surface such as a dirt road or a basket full of apples.

- * Stiff and straight: hairs or fur that stand on end, Mohawk
- * Objects that are extremely porous: filters, screens
- * The movement of air, wind, breezes
- * Group of 5: 5 people standing or walking together
- * Large flat object: a serving platter, flat lid
- * Flowing porous objects (using a modified 5) CL-5 > CL-O or CL-O > CL- 5: headlights, flashing lights, sunlight, shower
- * Objects that have projectile movements: vomit, diarrhea, flash flood, copious tears
- * Delineate height or movement of water: ocean, flood, rising water, waterfalls, rivers
- * Traffic: (using a modified 4 or 5 handshape) traffic jam, multi-lane freeways
- * Upright objects viewed while traveling very fast: commonly used to describe blurred scenery while driving very fast.

- * The movement of a fan (blowing air)
- * Batting of eyelashes (related to the sign FLIRT)
- * The position or movement of a leaf
- * Flame

CL: 5



CL: 5 video

Classifier



5 - CLAW

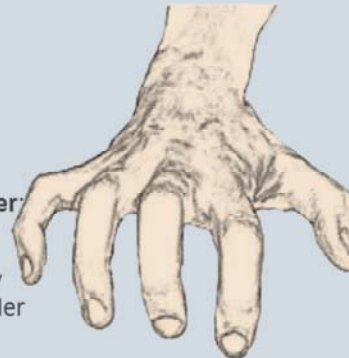
Scads of (too many to count): stars in the sky, freckles, audience or crowd, basket full of clothes, gobs of money

Objects that are rough, jagged: rake, the plowing device on a large tractor

Objects that are withered or curled up: withered tree

Representing groups of people sitting together: carpool

Hands: (modification of CL:5-claw) particularly for scaling or climbing large object, wall, boulder



CL: 5-claw

- * Scads of (too many to count): stars in the sky, freckles, audiences or crowds
 - * Large piles (used to show curved top of large piles)
 - * Objects that are rough or jagged: rakes, an animal growling, an animal biting
 - * Objects that are withered or curled up: withered plants
 - * Curly hair, wavy hair
 - * The process of freezing or the state of being frozen
 - * Representing groups of people sitting together: carpools, a group of people packing into a car, people in a raft
 - * clouds, smoke, airborne dust
 - * Balls: holding a ball, throwing a ball
 - * Hands: (modification of CL-5-claw) particularly for scaling or climbing large object, wall, boulder
 - * Gnarled: to freeze, wither up, knobby tires
- * Related lexicalized classifiers that have become standardized signs: SHOCKED- (brain-freeze), FREEZE, RAKE, SCADS, AUDIENCE, RICH, PLENTY, BITE [These are not classifiers. They are signs that have evolved from classifiers. They are frozen forms. If

you unfreeze them and change their movements they may become classifiers again.]

CL: 5-claw



CL: 5-claw video

Classifier



ILY

Type of airplane: with slight finger modifications, airplane can become a supersonic jet (CL: RY), a space ship (CL:XY)

Movement: landing, take off, skidding on a runway, crashing in midair



ILY-CL

The I LOVE YOU hand shape is used to show an airplane, It can demonstrate the airplane taking off, landing, flying or crashing. The I LOVE YOU shape is not used to show birds flying.

- * Type of airplane: with slight finger modifications, airplane can become a supersonic jet (CL- RY), a space ship (CL- XY)
- * Movement: landing, take off, skidding on a runway, crashing in midair

Some of the more popular classifiers:

[CL-1](#) Things that are (relatively) long and skinny. A pencil, a stick, a person.

[CL-A](#) an object in a certain location. A house, a lamp.

[CL-3](#)- vehicles, [motorcycle, park a car, row of cars, accident, garage]

[CL-4](#)-[CURTAIN]

[CL-5](#)-[scads of]

[CL-B](#)- flat things[roof, flat, wall]

[CL-C](#) [thick things, round pole-like things]

[CL-C](#)-(index and thumb) pepperoni, cookies, campaign buttons

[CL-F](#)

[CL-G](#)- thin things (or degree of thinness)

[CL-L](#)(bent)-[large, big-headed/egoistic/conceited, check, card, square]

[CL-L](#)-[check, card, square]

[CL-V](#)- legs, a person walking-(upside-down V), two people walking, [stand, walk-to, lay down, toss-and-turn, dive, jump, skate board, scooter, get up]

[CL-V](#) (bent fingers) = a small animal, or a larger animal sitting.

[CL-Y](#) Very wide things. A fat person walking ([WADDLE](#)). A hippopotamus's mouth.

Some of the more popular classifiers:

[CL-1](#) Things that are (relatively) long and skinny. A pencil, a stick, a person.

[CL-A](#) an object in a certain location. A house, a lamp.

[CL-3](#)- vehicles, [motorcycle, park a car, row of cars, accident, garage]

[CL-4](#)-[CURTAIN]

[CL-5](#)-[scads of]

[CL-B](#)- flat things[roof, flat, wall]

[CL-C](#) [thick things, round pole-like things]

[CL-C](#)-(index and thumb) pepperoni, cookies, campaign buttons

[CL-F](#)

[CL-G](#)- thin things (or degree of thinness)

[CL-L](#)(bent)-[large, big-headed/egoistic/conceited, check, card, square]

[CL-L](#)-[check, card, square]

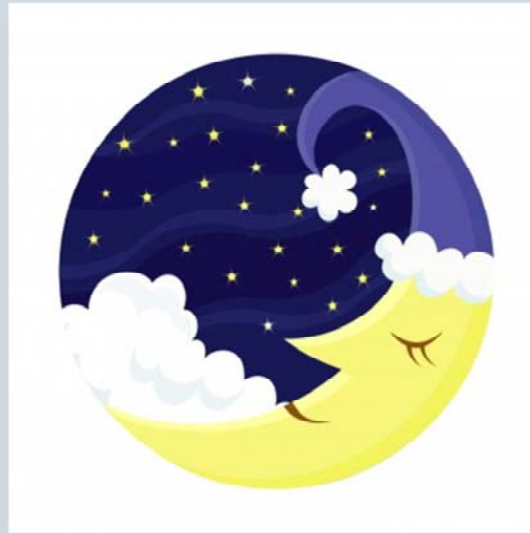
[CL-V](#)- legs, a person walking-(upside-down V), two people walking, [stand, walk-to, lay down, toss-and-turn, dive, jump, skate board, scooter, get up]

[CL-V](#) (bent fingers) = a small animal, or a larger animal sitting.

[CL-Y](#) Very wide things. A fat person walking ([WADDLE](#)). A hippopotamus's mouth.

Good Night Moon

The cow jumping over the moon
And there were three little bears, sitting on chairs
And two little kittens and a pair of mittens
And a little toy house and a young mouse
And a comb and a brush and bowl full of mush
And a quite old lady who was whispering "hush"
Goodnight moon
Goodnight moon
Goodnight cow jumping over the moon
Goodnight light and the red balloon
Goodnight bears goodnight chairs
Goodnight kittens goodnight mittens
Goodnight clocks and goodnight socks
Goodnight little house and goodnight mouse
Goodnight comb and goodnight brush
Goodnight nobody goodnight mush
And goodnight to the old lady whispering "hush"
Goodnight stars, goodnight air
Goodnight noises everywhere



Good Night Moon

